



DULWICH PICTURE GALLERY

JANUARY - DECEMBER 2011  
MASTERPIECE A MONTH  
PRESIDING GENIUS



ANNUAL REVIEW 2011 - 2012

**Dulwich Picture Gallery was established more than 200 years ago because its founders believed as many people as possible should see great paintings.**

**Today we believe the same, because we know that art can change lives.**

- What makes us world-class is our exceptional collection of Old Master paintings.
- What makes us unique is John Soane's purpose-built public gallery – the first in England – which allows visitors to experience those paintings in an intimate, welcoming setting.
- What makes us relevant is the way we unite our past with our present, using innovative exhibitions, authoritative scholarship and pioneering education programmes to change lives for the better.



---

DULWICH PICTURE GALLERY



## A Message from the Chairman of the Trustees

Dulwich Picture Gallery is built on history. From our founders' wish to have an art gallery 'for the inspection of the public', artists and scholars, aristocrats and school children have come by horse, train, car and bicycle to view our collection – Van Gogh walked from Central London to view the Gallery in 1873. The paintings and building are a monument to the tastes of two centuries ago, yet it is a testament to the timeless quality of great art that they remain as relevant today as they did when the Gallery was first opened. It is an honour to take up the chairmanship of this great institution, particularly during such an exciting time for the Gallery.

Our Bicentenary in 2011 was a time to celebrate our past, but our 201st year is about building for the future, and we look with ambition at the new goals ahead of us. In June 2012, we were thrilled to be awarded a £2 million Catalyst: Endowment grant from the Heritage Lottery Fund/Department for Culture Media and Sport Catalyst: Endowment fund. For us to access this funding we must raise a matching £4 million by 2016. The gauntlet has therefore been thrown

down, and the final push for *Picture Our Future: The Campaign for Dulwich Picture Gallery* has begun. Alongside my co-chair of the Campaign Cabinet, Bernard Hunter, we look forward to working with all of the Gallery's supporters to reach this goal.

The position we start from is a strong one: against the background of a troubled world-economy, the Gallery exceeded its fundraising targets for 2011-2012, broke records for shop sales, and enjoyed its second-highest visitor figures ever. Thanks and credit must go to James Lupton, who ended his chairmanship of the Gallery in 2011, and was awarded a CBE in the 2012 New Year's Honours List for his philanthropy. For fourteen years as a Trustee, including five as Chairman, James has advised and overseen the Gallery through considerable changes, including a major refurbishment, a huge swell in visitor numbers, and a boom in education initiatives and fundraising activities. Typically, James and Béatrice Lupton made the first major gift to the Catalyst: Endowment, and they continue to support us. My sincere thanks to them both.

The Sackler Director Ian Dejardin recognises a number of things of which we are proud overleaf, but I wanted particularly to celebrate our long-time Trustee and supporter Theresa Sackler, who was recently awarded a DBE in the Queen's Birthday Honours List, adding even more lustre to the Prince of Wales' Medal for Philanthropy which was awarded to her in 2011.

Dulwich Picture Gallery is built on history, but it is also built on people, and it has been my pleasure over the past few months to meet and get to know them: the volunteers, teachers, technicians, conservators, staff and of course the Friends who commit their time, energy and passion into making this Gallery what it is. My sincere thanks to all of them as we look to our 201st year and beyond.

**Simon Freakley**

CHAIRMAN OF THE TRUSTEES

Their Royal Highnesses The Prince of Wales and The Duchess of Cambridge visit Dulwich Picture Gallery for the *Great Art Quest*, in association with The Prince's Foundation for Children and the Arts





## A Message from The Sackler Director

### CELEBRATION, SUCCESS AND RECOGNITION

Most of the financial year 2011-12 fell within Dulwich Picture Gallery's bicentenary year, a year of sustained celebration, success and recognition for our engagement with the community. Two people have been mentioned already in the Chairman's statement: our departing Chairman of Trustees, James Lupton, who received a CBE for his services to the Gallery; and one of our longest-serving Trustees, Theresa Sackler, was awarded the prestigious Prince of Wales Medal for Philanthropy, and later, in the Birthday Honours List, a DBE. Our

congratulations to them. Jill Alexander, departing Chair of the Friends of Dulwich Picture Gallery, was similarly honoured with an MBE for her long voluntary service. Meanwhile, Trustee James Hughes-Hallett was awarded a CMG for services to British business interests in Asia and Australasia.

A new Chairman took over in January. Simon Freakley, CEO of Zolfo Cooper Ltd, comes to us with a long history of engagement with the arts, having served on Boards of The Grange Opera, the Folger Library and the English National Ballet. We look forward to a long and happy relationship with our new Chair.

A new Chair of the Friends of Dulwich Picture Gallery, Jenny Sweeney, took over from Jill Alexander.

Recognition for our remarkable community engagement came with two awards from the Royal Society for Public Health. One was for Excellence and Innovation, recognising the importance of our Good Times programme for the elderly and isolated in the community; the second was shared with the Oxford Institute of Ageing for the published report of that programme, entitled 'This is Living'. Meanwhile, the Friends' excellent magazine *InView*, edited by Peter Belchamber, won – again! – the award for best Friends' newsletter, 2011, from the British Association of Friends of Museums.

Important recognition of our work came in the welcome form of support: Good Times: Art for Older People is being presented by The M&G Group for a further three years, and the J P Getty Trust is making a significant donation to cover education department salaries. Meanwhile, the W D Foord Charitable Trust sponsored lighting for our beautiful sculpture, *Walking the Dog* by Peter Randall-

Page, a bicentenary gift from the Art Fund. The Friends made a special Bicentenary Adoption, of a magnificent *St Cecilia* by an unknown Bolognese artist, which was unveiled in November. Conservation funding was provided by the Bank of America Merrill Lynch Art Conservation Project to conserve the Gallery's great paintings by Murillo.

A remarkable year was marked by other clear indicators of success. 149,000 visitors came, the second highest number ever (after last year's record). 38,000 of those came via the education department, a remarkable proportion. Over £3 million was raised as part of our campaign, *Picture our Future: The Campaign for Dulwich Picture Gallery* – exceeding our target, an achievement all the more remarkable in a year of such global financial gloom and uncertainty. Meanwhile, as if to underline these successes, the shop broke every conceivable record consistently over the year.

In a year of magnificent celebrations, including two Friends' Gala Dinners and some memorable Private Views, the St Luke's Day Dinner hosted by James and Béatrice

Lupton, revitalising a 19th century tradition of honouring the Royal Academicians, not only attracted a magnificent turnout of great artists, but also provided a glimpse of some silver that belonged to our founders, Noel and Margaret Desenfans, and fascinating archival material put together by the curatorial team.

Finally, the Gallery was honoured to receive a visit, on March 15th 2012, from HRH the Prince of Wales, accompanied by the Duchess of Cornwall and the Duchess of Cambridge. This was to inspect educational work carried out in collaboration with the Prince's Trust, the visit culminating with an exhibition of children's self-portraits made of felt, produced as part of the Great Art Quest, in the Linbury Room.

## ENGAGEMENT WITH VISITORS

Dulwich Picture Gallery's engagement with its visitors was led by a typically varied and fascinating programme of exhibitions and displays within the Gallery.

*Masterpiece a Month: Presiding Genius*, curated by myself, continued to tantalise visitors with the prospect of a changing monthly masterpiece at the end of the

enfilade, from the Metropolitan Museum's *El Greco, the Vision of St John*, to Domenichino's *Adoration of the Shepherds*, from the National Gallery of Scotland.

The summer exhibition *Twombly and Poussin: Arcadian Painters* attracted a record number of visitors for a summer show: 28,000 people came to see this extraordinarily beautiful and challenging juxtaposition. The sad death of Cy Twombly in Rome on July 5th, 2011, shortly after the opening, turned this lovely show into a different kind of celebration, but one that did justice to both masters. Tacita Dean's film *Edwin Parker* (Cy's real name), provided a moving and poignant counterpoint.

The show after that, *Painting Canada: Tom Thomson and the Group of Seven*, again curated by myself, took many by surprise as they watched it turn into – by Dulwich's standards – a veritable blockbuster, with over 41,000 visitors over its short 11-week run, with queues forming all the way down the Gallery and out onto College Road. A symposium attracted a full house of fascinated people discovering, in many cases, an entirely new school of vibrant landscape painting;

and a brilliant Canadian artist-in-residence, Liz Charsley-Jory, brought the inspiration of Tom Thomson and his fellow artists to a year of exciting teaching projects.

Spring saw a unique and special pairing of vividly different shows: the perfect scholarly revelation of *Van Dyck in Sicily: Painting and the Plague* (part of *Rediscovering Old Masters: The Melosi Series*), which, in a coup of research by former Arturo and Holly Melosi Chief Curator at Dulwich, Dr Xavier Salomon, shed light on a virtually unknown but fascinating episode in Van Dyck's career; this was paired with *Ragamala Paintings from India: Poetry Passion Song*, an exquisite private collection of Indian miniatures.

Meanwhile, the Gallery was graced by the loan of the remaining five *Sacraments* from Nicolas Poussin's original, seminal series of seven from the Rutland Estate, joining the Gallery's own magnificent Poussins to turn the Lupton Room of the Gallery into a mecca for scholars of the Baroque.

Engagement with another very crucial audience – the press and media – rose to new levels in this year. Partnerships with *Apollo*

*Magazine*, the *Telegraph* and the *Globe and Mail* in Canada helped ensure unprecedented levels of press recognition, while a Press Launch held at the Lanesborough Hotel in November 2011 attracted more than 60 members of the international press, despite general strike action on that day. The ever-increasing importance of social media was demonstrated by the role of Twitter in helping *Painting Canada* achieve its spectacular word of mouth success.

Our commitment to improving the experience of all our visitors was demonstrated by several successful improvements to our facilities: the provision of a ramp for movement-impaired visitors, the upgrading and renovation of our public toilet facilities, the renovation of our exhibitions rooms and the installation of our esteemed curatorial team in new, less cramped accommodation in Chapel Cottage. Meanwhile, for our ever-growing online audience, a new online ticketing service was launched in February 2012, to become fully operational in time for *Andy Warhol: The Portfolios* in Summer 2012.

**Ian A C Dejardin** THE SACKLER DIRECTOR

JANUARY – DECEMBER 2011  
MASTERPIECE A MONTH  
PRESIDING GENIUS



Installation view of October's Masterpiece: John Constable, RA, *The Leaping Horse*, 1825, Oil on canvas, 142 × 187.3 cm, Royal Academy of Arts, London

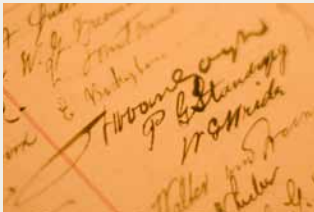


## Celebrating the Collection Innovating with Exhibitions

### Masterpiece a Month: Presiding Genius, January – December 2011

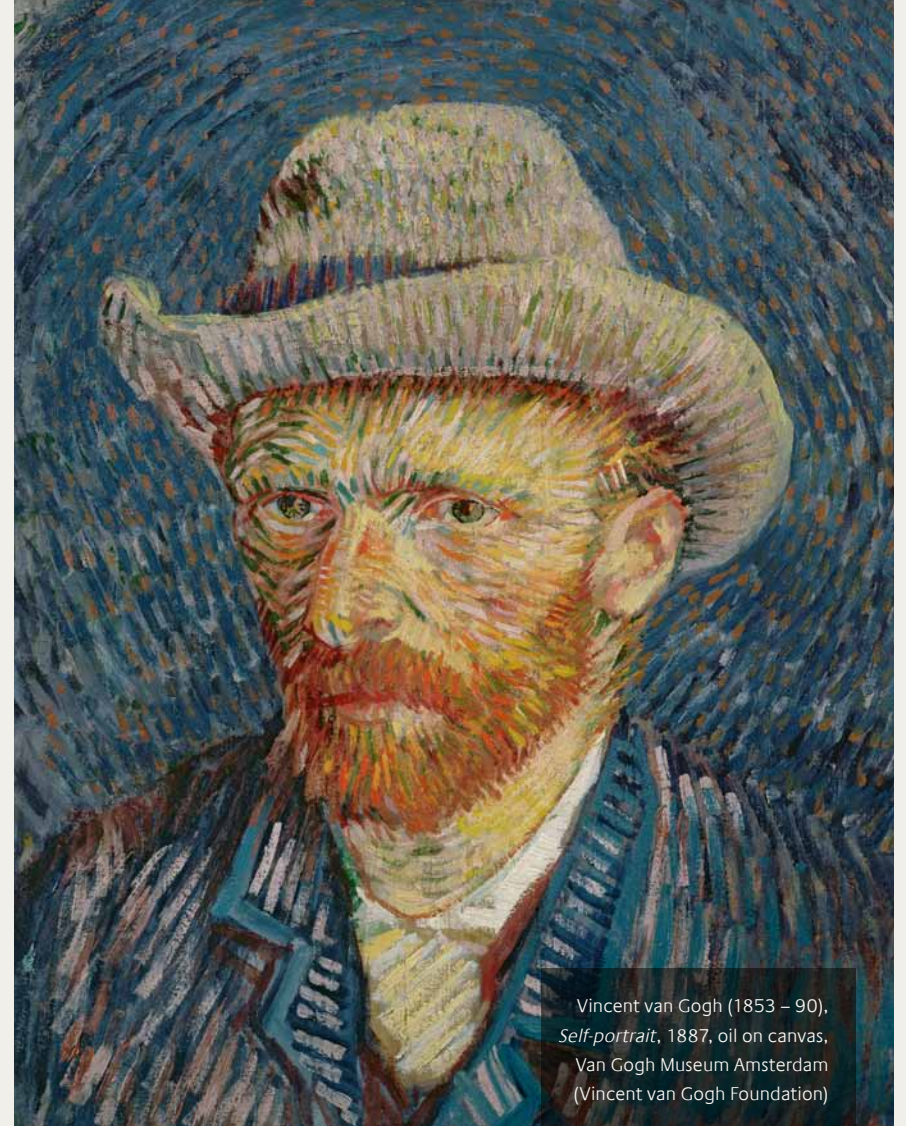
As part of the Bicentenary celebrations, the Gallery had a near total embargo on loans out of the permanent collection, so that the Gallery's finest masterpieces could be seen by the public in the best possible light. This was all the more important as throughout 2011 the enfilade was graced by a brilliant selection of works loaned from around the world for *Masterpiece a Month: Presiding Genius*.

With this exhibition, Ian A C Dejardin, The Sackler Director, curated a series of displays reflecting the importance of the building, the beauty of the collection, the Gallery's unique place in history and our strong international status. The idea was a simple one: a parade of twelve of the world's most glorious masterpieces loaned – one every month – from the world's foremost museums, unfolding like a calendar marking each month of the Gallery's passing Bicentenary year. Each work was placed in star position at the end of the Gallery's enfilade giving visitors to the permanent collection an additional treat by way of a beautiful 'birthday card'. A signed and numbered limited edition box set containing posters of each loan, interpretive texts, and special birthday messages from the Director of each lending institution provided an elegant accompaniment to the exhibition.



©Benedict Johnson

Vincent left his mark at Dulwich Picture Gallery when he signed the visitor book, just one of the extraordinary stories examined in this celebratory series of displays.



Vincent van Gogh (1853 – 90),  
*Self-portrait*, 1887, oil on canvas,  
Van Gogh Museum Amsterdam  
(Vincent van Gogh Foundation)

The exhibition was made possible with the generous support of the *Telegraph*, The Linbury Trust, Friends of Dulwich Picture Gallery, The Estate of Lesley Lewis, The Stanley Scott Trust, The Elizabeth Cayzer Charitable Trust, *Apollo Magazine*, Culture Critic, Mrs Helena Frost, Virgin Atlantic, The Sloane Club, The Big Give.

## Twombly and Poussin: Arcadian Painters, 29 June – 5 September 2011

### Nicolas Poussin: The Sacraments from 23 June 2011

June saw the Gallery juxtapose the extraordinary work of two great painters: Cy Twombly and Nicolas Poussin. This illuminating exhibition examined how the careers of two artists, albeit 350 years apart, followed parallel paths. Both arrived as foreigners in Rome aged around thirty, and stayed to become the pre-eminent painters of their day. The idea of this exhibition came to Dr Nicholas Cullinan, Curator of International Modern Art at Tate Modern, via a series of conversations with Twombly himself where the artist's affinity with Poussin was revealed. Twombly's oeuvre has explored numerous themes in common with Poussin, particularly those from classical mythology.

Dr Cullinan's ambitious selection brought together over 30 works including Dulwich's own outstanding collection of Poussins and

more than 20 works of painting, drawing and sculpture by Twombly. Visitors were invited to explore direct comparisons and connections within specific themes in a series of boldly hung rooms. The opening room included two of Dulwich's great Poussins - *Landscape with Travellers Resting* known as *Roman Road*, 1648, and *The Nurture of Jupiter*, c.1636-37 – displayed alongside Twombly's allegorical *Arcadia*, 1958, and *Aristaeus Mourning the Loss of His Bees*, 1973 – creating two very different meditations on the theme of Arcadia. The accompanying catalogue, supported by Gagosian Gallery, included an essay by the curator with contributions from Dr Xavier F Salomon and Katharina Schmidt. The exhibition drew 28,578 visitors.

The exhibition was supported by Gagosian Gallery, Friends of Dulwich Picture Gallery, American Friends of Dulwich Picture Gallery, Artists & Illustrators, Samuel H Kress Foundation, J. and M. Donnelly, and the Wyeth Foundation for American Art. The grant from the American Friends was made possible through the generosity

of Gregory R. Miller, The Embassy of the United States of America, Heath Lambert / Blackwell Green, The Sloane Club, Farrow & Ball Ltd, Martinspeed Ltd, and Virgin Atlantic.

In accordance with one of Dulwich Picture Gallery's aims to celebrate the unique qualities of the collection and space with flexible and innovative approaches to exhibiting work, an example of Twombly's sculpture was displayed in Dulwich's mausoleum. This created a profound resonance in this often overlooked space that divides Dulwich's temporary exhibition rooms. Alongside the exhibition, in Gallery 10, we were delighted to present Tacita Dean's 16mm film *Edwin Parker* (2011), an extremely rare portrayal of Cy Twombly. It was projected on a screen among the Dutch Italianates, providing a curious but evocative contrast with the paintings.

This exhibition gave the curatorial team the opportunity to show a special display of the permanent collection's existing Poussins, and with the arrival of the artist's five celebrated paintings from his first

series of the Sacraments, Dulwich Picture Gallery became one of the pre-eminent galleries in Europe to see his work. Painted for his friend and patron Cassiano dal Pozzo between 1637 and 1642, and generously lent by the Trustees of the 11th Duke of Rutlands 2000 settlement, *Ordination*, *Confirmation*, *Marriage*, *Extreme Unction* and *Eucharist* were displayed alongside the Gallery's own eight Poussins in Gallery 12. The natural light and the intimacy of the space, as well as the many visual connections between all of these works which were being seen together for the first time, provided a unique aesthetic experience.



‘One of those serendipitous happenings – enlightening, enchanting and exquisite – that none could predict and none should miss’ Brian Sewell

Installation view of Nicholas Poussin: the Sacraments in Gallery 12. Works on loan from the Duke of Rutland's Trustees, Belvoir Castle, Grantham, Leicestershire

A bold juxtaposition of two great painters, Twombly expressed his desire ‘to have been Poussin, if I’d had a choice, in another time’

Installation view of Twombly and Poussin: Arcadian Painters



## Painting Canada: Tom Thomson and the Group of Seven, 19 October 2011 – 8 January 2012

This exhibition gave an account of Canada's most famous collective of artists and their quest to depict Canada in paint. Relatively few people in England had heard of Tom Thomson, or of Lawren Harris, J.E.H. MacDonald, A.Y. Jackson, Arthur Lismer, Frank Johnston, Franklin Carmichael and Frederick Horsman Varley; so Dulwich Picture Gallery had the opportunity to bring this powerful visual legacy to new audiences. Household names in Canada, this was the first exhibition in Europe dedicated to Thomson and the original Group of Seven. The 41,275 visitors who came made this one of the Gallery's most successful exhibitions ever.

Curated by Ian A C DeJardin, The Sackler Director, with co-curators Katerina Atanassova and Anna Hudson, the exhibition included some of the Group of Seven's most famous paintings. With such a broad story to tell – coupled with an unprecedented willingness to lend

from the owners of these great works – Dulwich took a somewhat daring decision to extend the exhibition into a room ordinarily reserved for the collection. The result was an astonishing survey of 122 paintings – plus Tom Thomson's Sketchbox. The accompanying catalogue included illuminating essays by the curator, co-curators and contributions from Nils Ohlsen and Mariëtta Jansen. Liz Charsley-Jory was a welcome addition as the year-long Canadian Teaching Artist in Residence.

The exhibition was organised by Dulwich Picture Gallery and the National Gallery of Canada, in collaboration with the National Museum of Art, Architecture and Design, Oslo, and the Groninger Museum, The Netherlands, and with the generous involvement of the McMichael Canadian Art Collection and the Art Gallery of Ontario.

The exhibition was supported by AIMIA, RBC Wealth Management, Canadian Friends of Dulwich Picture Gallery, Friends of Dulwich Picture Gallery, Kinneir Financial Limited, Stikeman Elliot, Air

Canada, Explore Canada. Media Partners were *The Globe and Mail* and the *Daily Telegraph*. With the additional support of the Timothy Franey Charitable Foundation, The Funding Network and Farrow & Ball Ltd. The Canadian House Arts Trust and the Canadian Friends of Dulwich Picture Gallery generously supported the Canadian Teaching Artist in Residence programme.



Ian A C Dejardin The Sackler Director and curator of *Painting Canada: Tom Thomson and the Group of Seven*, gives a talk in the final room

## Ragamala Paintings from India: Poetry Passion Song 25 January – 27 May 2012

This collaboration with Brighton Museum & Art Gallery brought a unique exhibition of *ragamala* paintings from the Claudio Moscatelli collection to Dulwich. This was one of the first exhibitions of its kind in England to focus exclusively on this complex and beautiful genre of Indian miniature painting.

For nearly 400 hundred years, *ragamala* was one of the most popular genres of Indian miniature painting. These exquisite painted melodies would have been commissioned and exchanged by admirers of painting, poetry and music. Some 24 paintings – loose pages from multiple *ragamala* sets – were mounted and framed for the exhibition and assembled in an eloquent hang. The 21,880 visitors were encouraged to examine the exquisite detail of each painting and listen to examples of *ragas* during their visit.

It was an unusual endeavour for Dulwich Picture Gallery to have two exhibitions running alongside one another – *Ragamala* and *Van Dyck* – two very different displays. With the earliest *ragamala* painting dating back to circa 1605 these concurrent exhibitions provided a wonderful opportunity for visitors to compare the diversity of early seventeenth century artistic practice.

The accompanying *Ragamala* catalogue with exquisitely reproduced colour plates and prolific details featured essays by Catherine Glynn, Robert Skelton and Anna L. Dallapiccola, edited by Lizzie Watson. The exhibition was supported by The Friends of Dulwich Picture Gallery, The Luigi and Laura Dallapiccola Foundation and the media partner was the South London Press.

The Gallery also revealed a little-known Indian connection in the permanent collection, with a fascinating display in Gallery 1 of the portrait painter Tilly Kettle (1734-1786). Kettle was one of the first British painters to go to India in the



1760s, working for the British Raj as well as becoming court painter to Shuja ud-Daula, the Subedar Nawab of Oudh. Dulwich's double portrait by Kettle of Mary and Eliza Davidson (DPG 582) shows the daughters of Alexander Davidson, an East India Company servant, wearing 'turbans' in their hair, an accessory brought back from India. Our curatorial intern, Sarah Capes, from the Courtauld MA course, did some fascinating research on the portrait, which formed the subject of a small focused display in Gallery 1.



A closer look: visitors enjoying the exquisite detail of the Gauri Ragini of Shri Raga  
c.1680-90, Rajasthan, gouache on paper, Claudio Moscatelli Collection

## Rediscovering Old Masters: The Melosi Series

### Van Dyck in Sicily: 1624-1625 Painting and the Plague 15 February – 27 May 2012

This, the second exhibition in *Rediscovering Old Masters: The Melosi Series*, a significant strand of programming for Dulwich Picture Gallery, told the extraordinary story of a year and a half in the life of the young Flemish painter. This period in Sicily had been important for the artist's career despite the horrific events that surrounded him as the plague raged through the island. The exhibition gathered, for the first time, all of the surviving works believed to have been painted during this time as he continued to produce paintings, many of which related to the cult of Saint Rosalia, the heavenly intercessor against the epidemic.

Curated by Dr Xavier F Salomon, Curator of Southern Baroque, The Metropolitan Museum of Art, New York (until 2010 the Arturo and Holly Melosi Chief Curator here at Dulwich), this fascinating chronicle opened with Dulwich's own great portrait by Van Dyck, *Emanuele Filiberto*, the Viceroy of Sicily. Securing the loan of the garniture of armour Van Dyck depicted in the portrait of the viceroy created a rare opportunity to see sitter and armour united, bringing Dulwich's painting to life in the exhibition. Dr Salomon's research brought generous loans to Dulwich including twelve paintings, one marble bust and one sketchbook.

The accompanying catalogue gave further insight into this compelling selection of works with an essay and catalogue entries by Dr Salomon including an animated account of Dr Salomon's sea journey from Genoa to Palermo following in the artist's footsteps.



The exhibition was supported by the American Friends of Dulwich Picture Gallery and the Friends of Dulwich Picture Gallery, through the generosity of The Arthur and Holly Magill Foundation and Arturo and Holly Melosi. The exhibition drew 22,454 visitors.





*From left to right: Armour of Emanuele Filiberto of Savoy, c.1606, etched steel partly gilt. Patrimonio Nacional, Real Armería del Palacio Real de Madrid. Emanuele Filiberto of Savoy, c.1635, marble. Galleria Sabauda, Turin. Emanuele Filiberto of Savoy, 1624, oil on canvas, Dulwich Picture Gallery, London.*

## Art for All

Education had a colourful year, with 37,928 people participating in taught programmes, while learning programmes continued to serve local communities, significantly breaking down barriers to encourage engagement, access and forming new, long term relationships. The year culminated in a visit from Their Royal Highnesses The Prince of Wales, The Duchess of Cornwall and The Duchess of Cambridge on their first official public engagement together. Meanwhile, curatorial continued their standards of academic excellence with several talks and publications.

The Education Department relies on over 40 freelance artists and specialist teachers to deliver a diverse internal and Reach Out programme across South London. It would be impossible for us to operate without the tireless and dedicated team of volunteer teachers, Reach Out community volunteers, Good Times Volunteers, interns and Gallery guides. We remain immensely grateful for the time, energy and passion given by talented and generous people who enable us to offer a unique gallery learning experience.

## SCHOOL PROGRAMME

28,000 pupils were taught across the Gallery's education programmes last year. Gallery visits were over-subscribed with a waiting list. There was a significant increase in visits to schools in the Reach Out programme.

One of the Gallery's stand-out events this year was the Royal Visit on the 15th March 2012, when Their Royal Highnesses came to see schools as part of the *Great Art Quest*, in association with The Prince's Foundation for Children and the Arts. This programme targets schools that might not usually participate in a long term Gallery learning programme, with an exhibition of pupils' work along with creative workshops.

The Schools Programme this year has been generously funded by the Garfield Weston Foundation.

‘This has been truly an amazing experience for my class – one they will never forget. Over the last months you’ve given my class the confidence, self-esteem boost and much needed fun time they craved. The amazing press coverage is only one small part of the benefit to us’

Year 6 Class Teacher, Goodrich Primary

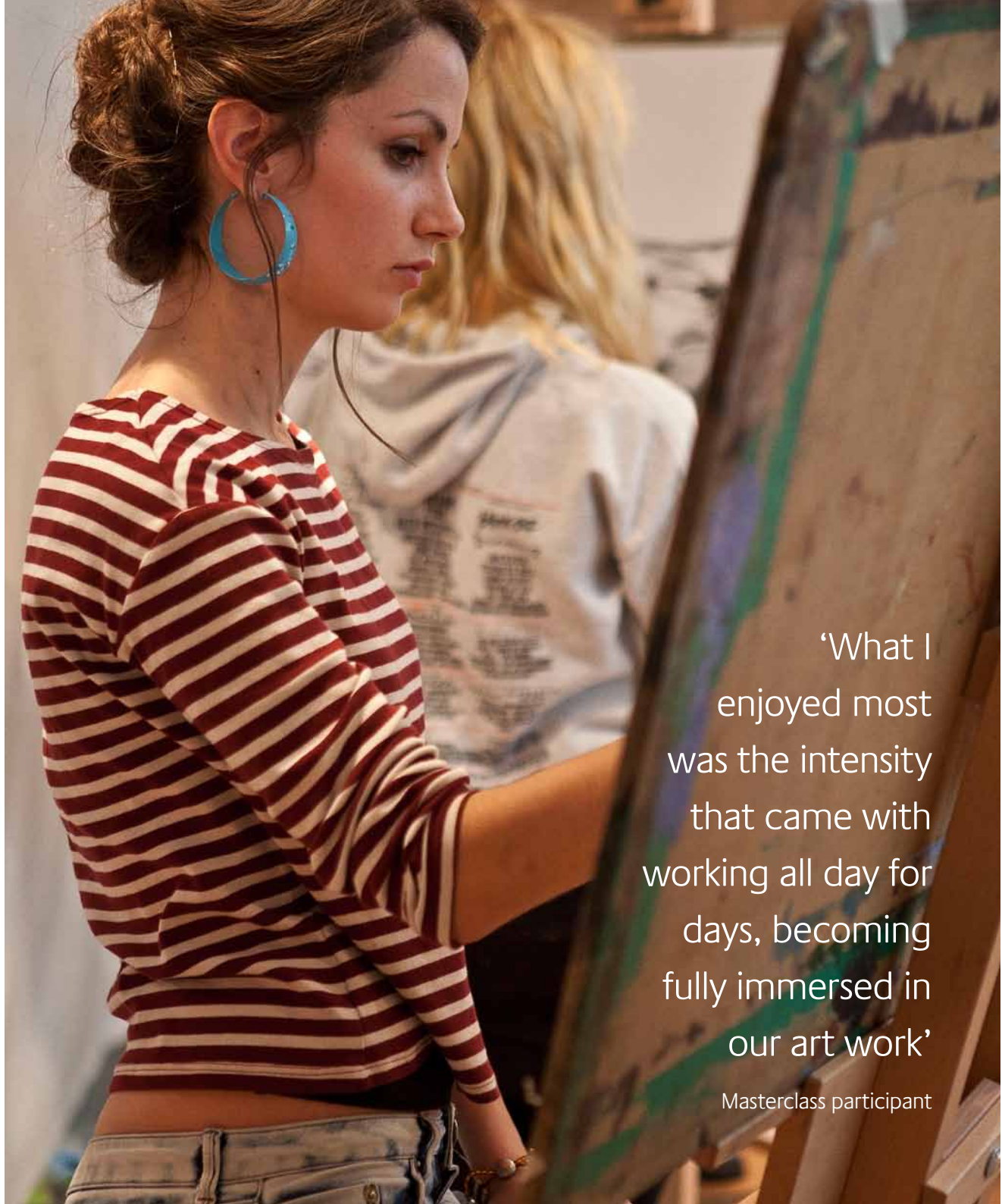


## PUBLIC PROGRAMME

A vibrant range of new courses included Canadian Group of Seven inspired landscapes, patchwork quilting, wood engraving and Sketching Tours of London. After-school and holiday programmes were buzzing; and families were creative together with new intergenerational courses. One adult participant said that the course had improved the strained relationship between her and her daughter.

In partnership with NADFAS Young Arts, portfolio development Masterclasses were free to talented young people of 16 and 18 ending with a Gallery Private View.

Family activities in the Gallery this year have been generously supported by The Mactaggart Third Fund and Harvey and Wheeler.



‘What I enjoyed most was the intensity that came with working all day for days, becoming fully immersed in our art work’

Masterclass participant

Liz Charsley-Jory, the Canadian Artist in Residence, leads a Good Times class



## CANADIAN ARTIST IN RESIDENCE

In response to the exhibition *Painting Canada* and generously supported by The Canadian Friends of Dulwich Picture Gallery and Canada House Arts Trust, Liz Charsley-Jory joined us as Canadian Artist in Residence. Since October 2011, Liz has developed

her own artwork while delivering inspiring teaching both in the Sackler Studio and out in the community. A fan of the *Group of Seven* since childhood, Liz has used Canadian art to inspire participants aged 3 to 90 to create striking landscapes.



‘Thank you for persevering with me... if I stayed home, I’d dissolve’

Good Times participant

## COMMUNITY ENGAGEMENT PROGRAMMES

Pioneering ‘Reach Out’ Community Programmes continued to engage with partner centres and individuals throughout South London, offering a range of creative workshops, lectures, tours, external exhibitions, public artwork and celebratory events.

## GOOD TIMES: ART FOR OLDER PEOPLE PRESENTED BY THE M&G GROUP

Last year we worked in partnership with 75 centres for the elderly offering a menu of Gallery activities designed for older people,



enriching the lives of around 1,400 people. Our award winning *Prescription for Art* initiative now includes *Repeat Prescription*, doubling the beneficial effect. Local GP Surgeries invite older isolated or vulnerable patients to the Gallery for creative workshops.

## GOOD TIMES PUBLIC ARTWORK

*Growing Together* was a successful collaboration between Dulwich Picture Gallery and Kings’ College Hospital. The Good Times team went weekly to work with staff, carers and elderly patients in the Dementia ward. Though it was a challenging task, relationships were made in creative sessions and a painted silk collage now hangs in the entrance of the newly refurbished ward.



## RESEARCH

We collaborated with Canterbury Christ Church University and Nottingham Contemporary Gallery on the project *Viewing Together*. University researchers examined how 20 people with mild to moderate dementia and their family carers engaged with the Gallery’s collection. This research is to be published in academic journals.

*Good Times: Art for Older People* is generously supported by The M&G Group and The Clore Duffield Foundation.

*Prescription for Art* participant working with local school children on an intergeneration project





## URBAN YOUTH

*Stepping Out*, a dance project in collaboration with Rambert Dance Company and The Movement Factory (a community street dance initiative in South London) resulted in a powerful performance in the Gallery grounds inspired by the conflict represented in the collection.

*Reflections* was an intergenerational project that involved young people from the UK Charity Fairbridge working alongside older people from the Gallery's Good Times: Art for Older People Programme. Together they explored digital and medium format photography across generations; the photographs were then displayed at a Gallery Private View.

Youth activities at the Gallery are currently supported by The BAND Trust, The Embassy of the United States of America and the Mactaggart Third Fund.

## INCLUSIVE ARTS AT THE PICTURE GALLERY

Last June, to link with the national initiative, Carers' Week, free admission, tours of the Gallery and refreshments were offered to those caring for someone at home. We were overwhelmed by the response from those rarely able to have time for cultural activity. Specialist educational activities of this kind are currently supported by the Friends of Dulwich Picture Gallery.

‘Since the riots, it’s so important to change people’s perception of young people... there’s never been an awkward moment on this project’

Youth worker from Fairbridge



## CURATORIAL PUBLICATIONS AND LECTURES

### AMY CONCANNON:

Chair and co-organiser of the symposium 'A sense of place: Artists in the Lake District', held at the Wordsworth Trust, Grasmere, December 2011.

### XAVIER BRAY:

*Van Dyck in Sicily*

special lecture at the Summerleaze Gallery, Tisbury and Dilettanti Society, London, February 2012.

*Zurbarán: the painter of monks*

special lecture, Richmond Art Society, London, autumn 2011.

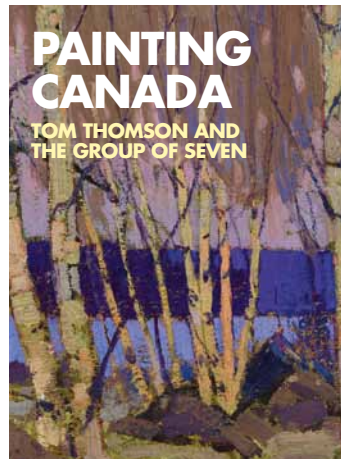
*The Future of Digital Technology in Museums*

speaker at a debate organised by the MA curating course at the Courtauld Institute, London, autumn 2011.

### PUBLICATIONS

X. BRAY

'A possible copy by Zacharie Astruc of Pedro de Mena's *Saint Francis* from Toledo Cathedral', catalogue entry in *Buddha, Barok & Bryggeren: Carl Jacobsens ukendte samliger*, eds. M. Molesen, C. Fischer and T. Thunø, Ny Carlsberg Glyptotek, 2012, cat. 101, pp. 205-7



I A C DEJARDIN ET AL.

Painting Canada: Tom Thomson and the Group of Seven, exh. Cat, Dulwich Picture Gallery, Philip Wilson Publishers, 2011



Syracuse University London students are led on a behind-the-scenes tour of the Gallery by the Holly and the Arturo and Holly Melosi Chief Curator Xavier Bray



## The Bicentenary and Beyond

Unlike most British galleries of our importance, we operate without the safety net of regular government funding. Instead, we generate income through admission fees, our shop and facilities, grants and donations, and income from our endowment.

This year we continued the quiet phase of *Picture Our Future: The Campaign for Dulwich Picture Gallery*, drawing on our tradition of visionary philanthropy.

### The campaign has three goals:

- 1. Increase our endowment by £10 million** so that we can continue our core artistic and outreach activities in perpetuity
- 2. Establish a £9 million Exhibitions and Gallery Initiatives Fund** that will allow us to develop new exhibitions and outreach opportunities
- 3. Invest £1 million in capital refurbishments** to improve and maintain the building, access and visitor experience

Thanks to the numerous acts of generosity by individual donors, grant-making trusts,

private trusts and the corporate sector, Dulwich Picture Gallery blossomed during a challenging financial year and we are over two-thirds towards our target with almost £14 million in cash and pledges. Dulwich Picture Gallery was fortunate this year in receiving continued pledges, in particular an outstanding gift from the Dr Mortimer and Theresa Sackler Foundation for The Sackler Director of Dulwich Picture Gallery, and outstanding gifts from the Linbury Trust towards our endowment appeal.

In addition to this, we received major gifts towards our campaign goal. Support from our Friends, patrons and new connections provided increased financial security and a stimulus to the Gallery. The accomplishments described throughout this Review were possible as a result of substantial private support, for which we owe an enormous debt of gratitude. Support from charitable trusts and foundations increased, to the benefit of all areas of the Gallery. In July, the Gallery's Education team benefitted from a generous grant from the J. Paul Getty Jnr Charitable Trust. Later in the year, the Esmée Fairbairn Foundation selected the Gallery for a special birthday grant in celebration of their 50

years of grant making. This gift enriched our endowment enabling us to secure core artistic and outreach activities.

We were also able to continue our *Rediscovering Old Masters: The Melosi Series with Van Dyck in Sicily: Painting and the Plague*, made possible due to a major grant from the American Friends of Dulwich Picture Gallery Inc., through the on-going generosity of The Arthur and Holly Magill Foundation and Arturo and Holly Melosi. This is in addition to their substantial support of the Arturo and Holly Melosi Chief Curator at Dulwich Picture Gallery.

Generous contributions from individual donors helped conserve important works in our collection, fund posts, publications, exhibitions as well as the activities of our free community programme which we offer every day without charge. We must also note that our loyal Friends of Dulwich Picture Gallery once again provided a donation of more than £200,000 towards the Gallery's greatest needs, our exhibition programme and our outreach activities, through their membership and event activities. This year, the Gallery benefitted from increased links with corporations. In addition to the generous support from The M&G Group,

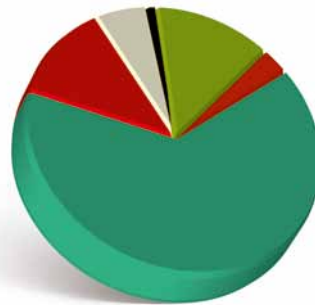
we forged partnerships with the Royal Bank of Canada and Aimia – two Canadian companies – which became presenting sponsors of *Painting Canada: Tom Thomson and the Group of Seven*. Our longstanding partnership with the Bank of America Merrill Lynch continues to thrive and we were extremely fortunate that our masterpieces by Murillo received conservation funding/grant provided by the Bank of America Merrill Lynch Art Conservation Project.

The Gallery also established new relationships across the Atlantic through the formation of the Canadian Friends of Dulwich Picture Gallery who were also Presenting Sponsors of *Painting Canada*. This organisation flourished and we are grateful to the individual donors and members whose support helped make this ground-breaking exhibition possible.

To the individual benefactors, trusts, companies and lenders of paintings named in this Review, to those who have chosen to remember the Gallery by leaving a gift in their Will, and to those who have chosen to remain anonymous, the Gallery owes tremendous gratitude. Thank you.

## SOURCE OF GIFT / GRANT

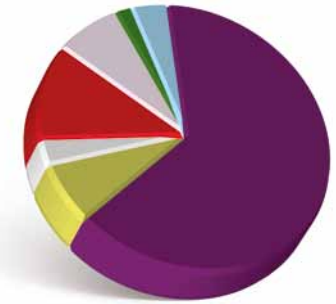
SOURCES OF INCOME			
TOTAL INCOME RESOURCES	ROUND %	%	AMOUNT
Corporate	13	12.85	414
1811/Desenfans Circle	2	2.7	87
General Giving	64	63.72	2,053
Gifts in Kind	13	13.16	424
Foundation Schools	0	0.47	15
Friends	6	6.21	200
Legacies	1	0.90	29
	99%	100.00%	3,222



- Corporate
- 1811 / Desenfans Circle
- General Giving
- Gifts in Kind
- Friends
- Legacies

## SOURCES OF INCOME

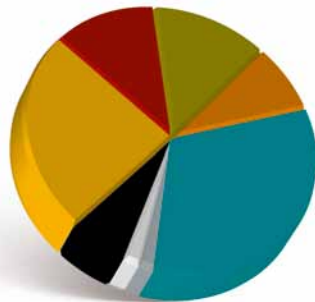
INCOME / EXPENDITURE			
TOTAL INCOME RESOURCES	ROUND %	%	AMOUNT
Donations, Grants and Sponsorship	64	64.84	3,222
Shop Sales	7	6.8	338
Catering and Gallery Hire	3	2.78	138
Investment Income	12	12.26	609
Admission Charges	8	7.79	387
Education	2	1.97	98
Exhibition Sales and other collection	4	3.56	177
	100%	100.00%	4,969



- Donations, Grants & Sponsorship
- Shop Sales
- Catering and Gallery Hire
- Investment Income
- Admission Charges
- Education
- Exhibition Sales and Other Collection Income

## ALLOCATION OF GIFT / GRANT

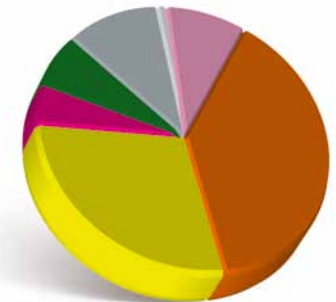
TYPE OF INCOME			
	ROUND %	%	AMOUNT
Operating	15	13.81	445
Exhibition	9	8.81	284
Education	38	38.11	1,228
Conservatn/Collection	2	2.17	70
Bicentenary Refurb	2	2.23	72
Expendable Endowm't	7	6.92	223
Permanent Endowm't	28	27.93	900
	101%	100.00%	3,222



- Operating
- Exhibition
- Education
- Conservation / Collection
- Bicentenary Refurbishment
- Expendable Endowment
- Permanent Endowment

## ALLOCATION OF EXPENDITURE

TOTAL RESOURCES EXPENDED			
	ROUND %	%	AMOUNT
Education	9	9.20	399
Exhibition	39	38.92	1,688
Collection & Building	28	27.53	1,194
Publicity	5	5.05	219
Trading	8	7.63	331
Fundraising and Investment Mgmt	11	10.68	463
Governance	1	0.99	43
	101%	100.00%	4,337



- Education
- Exhibitions
- Collection and Building
- Publicity
- Trading
- Fundraising and Investment Mangement
- Governance

## CONSERVATION: ADOPT AN OLD MASTER

This scheme continues with success and a pleasing number of paintings and frames have been conserved and returned to the Gallery this year (see Appendix 1). The largest and most challenging was the *Saint Cecilia* in her ornate frame, which was unveiled in November after spending two years away.

Having entered the collection in 1811 as a work by Agostino Carracci but subsequently de-attributed, the unveiling of *Saint Cecilia* opened up a channel of discussion as to its authorship: suggestions from scholars around the globe included Ferrarese and Bolognese artists Pasquale Ottino and Carlo Bononi. Although we are yet to make a definitive attribution, it is thrilling to see this restoration yield such a response from experts and the public alike.



BEFORE



AFTER

If you are interested in getting involved, or supporting the Gallery in any way, please contact our Development team below.

Email: [development@dulwichpicturegallery.org.uk](mailto:development@dulwichpicturegallery.org.uk)

Telephone: 020 8299 8728

## APPENDIX 1: LOANS OUT OF THE PERMANENT COLLECTION

### BRITISH SCHOOL

*William the Conqueror*  
(DPG 521)

Exhibition: **Picturing History : a Portrait Set of Early Kings and Queens**

National Portrait Gallery,  
London, 19 July 2011 –  
4 December 2011

### CARLO FRANCESCO NUVOLONE

*Creation of Eve* (DPG235)

Exhibition: **Reciprocal Loan**

Buscot Park, Oxfordshire,  
8 November 2011 –  
12 May 2013

### SIR ANTHONY VAN DYCK

*George Digby,  
2nd Earl of Bristol* (DPG170)

Exhibition: **Reciprocal Loan**

Apsley House, English Heritage,  
London, 7 November 2011 –  
27 May 2012

### RUBENS

*Venus Mourning Adonis*  
(DPG 451)

Exhibition: **Rubens: Venus  
Lamenting Adonis**

The Israel Museum, Jerusalem,  
Israel, 10 January 2012 –  
7 June 2012

### PARRY WALTON

*Still Life* (DPG429)

Exhibition: **“Dead Standing  
Things”: Still Life 1660 – 1740**

Tate Britain, London, 21 May  
2012 – 16 September 2012

## List of Adoptions

### COMPLETED ADOPTIONS



### WILLIAM BEECHEY

*John Philip Kemble* (DPG 111)

Adopted by: The Elizabeth  
Cayzer Charitable Trust  
Conservator: Nicole Ryder



### THOMAS GAINSBOROUGH

*Philippe Jacques de  
Loutherbourg* (DPG 66)

Adopted by:  
Mrs Philip Poole-Wilson  
Conservator: Nicole Ryder

### THOMAS GAINSBOROUGH

*Thomas Linley the Younger*  
(DPG 331)

Adopted by: The Friends of  
Dulwich Picture Gallery  
Conservator: Nicole Ryder

### BOLOGNESE SCHOOL

*Saint Cecilia* (DPG 2)

Adopted by: The Friends of  
Dulwich Picture Gallery  
and The Pilgrim Trust  
Conservator: Nicole Ryder



### CIRCLE OF ANNIBALE CARRACCI

*Portrait of an Unknown Lady*  
(DPG 254)

Adopted in Memory of David  
and Evelyn Douglas  
Conservator: Nicole Ryder

## Ongoing Adoptions

### GERARD HOET

*Apollo and Daphne and  
Pan and Syrinx* (DPG 176 and 179)

Adopted by: Adopted in  
memory of Gerard Talbot and  
Nina White  
Conservator: Sophie Plender

### MATHIEU LE NAIN

*Musicians* (DPG 180)

Adopted by: Charles Wynn-  
Evans and Alex McColl  
Conservator: Sophia Plender

### BARTOLOMÉ ESTEBAN MURILLO

*The Virgin of the  
Immaculate Conception*  
(DPG 187)

Adopted by:  
Simon and Meg Freakley  
Conservator: Nicole Ryder

### BARTOLOMÉ ESTEBAN MURILLO

*Three Boys* (DPG 222)

Adopted by: The Bank of  
America Merrill Lynch Art  
Conservation Project  
Conservator: Nicole Ryder

### BARTOLOMÉ ESTEBAN MURILLO

*Invitation to a Game  
of Argolla* (DPG 224)

Adopted by: The Bank of  
America Merrill Lynch Art  
Conservation Project  
Conservator: Sophia Plender

### AFTER BARTOLOMÉ ESTEBAN MURILLO

*The Infant Christ as the  
Good Shepherd* (DPG 272)

Adopted by:  
Mr and Mrs Michael Cronk  
Conservator: Nicole Ryder

**FOLLOWER OF  
BARTOLOMÉ  
ESTEBAN MURILLO**

*The Infant Saint John* (DPG 211)

Adopted by: Elior UK  
Conservator: Nicole Ryder

**JOHN OPIE**

*Self-Portrait* (DPG 94)

Adopted by: The Opie  
Consortium  
Conservator: Sophia Plender

**JOSHUA REYNOLDS**

*An Officer on Horseback*  
(DPG 333)

Adopted by: The Sunley Trust  
Conservator: Nicole Ryder

**WORKSHOP OF TITIAN**

*Venus and Adonis* (DPG 209)

Adopted by: Sheila Boyle  
Conservator: Sophia Plender

## Adopt a Frame

### COMPLETED

**ANNIBALE CARRACCI**

*Madonna and Child with  
Saint John* (DPG 230)

Adopted by NADFAS  
South West area  
Conservator: Tom Proctor

**CIRCLE OF  
ANNIBALE CARRACCI**

*Portrait of an Unknown Lady*  
(DPG 254)

Adopted in Memory of  
David and Evelyn Douglas  
Conservator: Tom Proctor

**BOLOGNESE SCHOOL**

*Saint Cecilia* (DPG 2)

Adopted by: The Friends of  
Dulwich Picture Gallery  
Conservator: Tom Proctor

### ONGOING

**ANDREA SOLDI**

*Louis François Roubilliac*  
(DPG 603)

Adopted by: Adopted by  
the family of H J Spiller  
Conservator: Tom Proctor

**FOLLOWER OF  
BARTOLOMÉ ESTEBAN  
MURILLO**

*The Infant Saint John* (DPG 211)

Adopted by: Elior UK  
Conservator: Tom Proctor

**AFTER BARTOLOMÉ  
ESTEBAN MURILLO**

*The Infant Christ as the  
Good Shepherd* (DPG 272)

Adopted by: Mr and Mrs  
Michael Cronk  
Conservator: Tom Proctor

**BARTOLOMÉ ESTEBAN  
MURILLO**

*The Virgin of the  
Immaculate Conception*  
(DPG 187)

Adopted by:  
Simon and Meg Freakley  
Conservator: Tom Proctor

## APPENDIX 2: LIST OF DONORS AND SUPPORTERS

### DONORS

The Trustees are grateful to those listed below, and others who wish to remain anonymous, who have supported the Gallery.

#### Patron

Lord Sainsbury of Preston Candover KG

#### Founding Benefactors

Noël Joseph Desenfans  
Sir Peter Francis Bourgeois RA

Margaret Desenfans

Sir John Soane

#### Outstanding Benefactors

Friends of Dulwich Picture Gallery

Heritage Lottery Fund

The Lesley Lewis Estate

Linbury Trust

Béatrice & James Lupton, CBE

\*The Arthur & Holly Magill Foundation

National Heritage Memorial Fund

Dr Mortimer & Theresa Sackler Foundation

Garfield Weston Foundation

#### Major Benefactors

Bank of America Merrill Lynch

British American Arts Foundation

The Clore Duffield Foundation

Edith Callam Memorial Trust

Esmée Fairbairn Foundation

Lazard Bros & Co Ltd

Sir Edwin Manton

The Bernard Sunley Charitable Foundation

#### Major Benefactors in 2011-2012

+The Arthur and Holly Magill Foundation

Dr Mortimer and Theresa Sackler Foundation

#### Benefactors in 2011-2012

Esmée Fairbairn Foundation  
Linbury Trust

J Paul Getty Jnr Charitable Trust

Friends of Dulwich Picture Gallery

American Friends of Dulwich Picture Gallery, Inc.

#### Supporters in 2011-12

Aimia

Globe and Mail

Air Canada

Bank of America Merrill Lynch

The Canadian Friends of Dulwich Picture Gallery

Canadian Tourism Commission

The Clore Duffield Foundation

Friends of Dulwich Picture Gallery

Apollo Magazine

Gagosian Gallery

Lady Getty

Kinnear Financial

The M&G Group

Royal Bank of Canada

DCMS/Wolfson Museums and Galleries Improvement Fund

The Daily Telegraph

Wolfson Foundation

#### Donors in 2011-12

Blackwall Green

Wall Street Journal Europe

J and M Donnelly

The Elizabeth Cayzer Charitable Trust

The BAND Trust

The Helen Hamlyn Trust

Pilgrim Trust

Béatrice and James Lupton, CBE

The Lesley Lewis Estate

Friends of Dulwich Picture Gallery

Mr & Mrs Michael Cronk

Mrs Penny Treadwell

Timothy Franey Charitable Foundation

Mr & Mrs Denis Tinsley

Embassy of the United States of America

Charterhouse in Southwark

Mr & Mrs Tom Beazley

Ralph I Goldenberg

Philip Saul

Mr & Mrs Brian Foord

Ms Maralin Belchere

The Funding Network

Luigi and Laura Dallapiccola Foundation

Ms Annabelle Lupton

The Prince's Foundation for Children and the Arts

And others who wish to remain anonymous

### MEMBERS 2011-12

#### DESENFANS CIRCLE

Lady Marie Alexander of Weedon

Mr Patrick Mears & Ms Rachel Anderson

Mr & Mrs Noël Annesley

Mr & Mrs Paul Barry

Mr & Mrs Nicholas Barton

Mr & Mrs Tom Beazley

Mr & Mrs Michael Binnion

The Hon Peter & Sally Cadbury

Mr & Mrs Dominic Casserley

Mr & Mrs Charles Covell

Mr & Mrs Michael Cronk

Mr Dónall Curtin & Ms Anne O'Donoghue

Polly Devlin OBE

Mr & Mrs Robert Elliott

Mr & Mrs Mark Evans

Ms Nathalie Faure-Beaulieu

Mr & Mrs Simon Freakley

\*Mrs Helena Frost

Lady Getty

Mr & Mrs Charles Harman

Dr & Mrs Julian Harriss

Mr Hugh Hudson-Davies

Mr James Hughes-Hallett CMG

Mr Bernard Hunter (Chairman) & Mr Alberto Badino

Lord & Lady Kakkar

Dr Philip Kay & Ms Alexandra Jackson Kay

Mr & Mrs James King

Mr & Mrs Herbert Kretzmer

Béatrice and James Lupton, CBE

Mr & Mrs Arturo Melosi

Mr & Mrs Nicholas Merriman

Mr & Mrs Christopher North

Mr & Mrs Richard Oldfield

Mr & Mrs Ian Park CBE

Mr Hamish Parker

Mr & Mrs Michael Rabinovich

His Honour Michael Rich QC

Mr & Mrs Philip Richards

Sir David & Lady Richards

Mrs Yvonne Riley

Dame Theresa Sackler DBE

Lord Sainsbury of Preston Candover KG

Mrs Victoria Sharp

Mr & Mrs Robert Stirling

Mr & Mrs Patrick Sumner

Mr & Mrs Robert Suss

Mr & Mrs Robert Swannell

Mr & Mrs Denis Tinsley

Mrs Penny Treadwell

Mr & Mrs Wilf Weeks

The Hon Laura Weinstock

Mrs Mary Weston CBE

Professor Peter G Whiteman QC

Tony & Marnie Woodward

And others who wish to remain anonymous

#### 1811 CLUB MEMBERS

Mr & Mrs Sandy Alexander

Mr & Mrs Leslie Allan

Miss Valerie Austin

Lady Black

Mr & Mrs Ian Boulton

Mr Francis Carnwath CBE & Ms Caroline Wiseman

Mr & Mrs Raymond Cousins

Mrs Pat A Cox

Mr Phillip E Cox

Mr & Mrs Andrew Cullen

Mr & Mrs Peter Ellis

Dr & Mrs Tyrrell Evans

Mr & Mrs John Fairbairn

Mr Marshall Field CBE

Mr Nigel Fletcher & Ms Caroline Burton

Mr & Mrs Brian Foord

Mr & Mrs Derek Fordham

Mr & Mrs Peter Frost

Ms Hilary Gaster

Mr & Dr Surojit Ghosh

Mrs Marion Gibbs CBE

Mr & Mrs Oliver Gillie

Mr & Mrs Bruce Gregory

Mr & Mrs James Hammer

Sir David & Lady Hancock

Ms Caroline Hansberry

Ms Helen Grace Hardy & Mrs Marion Cayless

Ms Mary Haynes

Mr & Mrs Bill Higman

\*Dr Weston & Mrs Jean Howell

Mr & Mrs Christopher King

Mr & Mrs James Kirkman

Mr & Mrs Martin Kramer

Lord & Lady Lester of Herne Hill

Mr & Mrs Mark Loveday

Mrs Jill Manuel

Mrs Judy Marshall

Mr Philip McHugh & Ms Byrna West

Mr & Mrs Nigel McNair Scott

Mr & Mrs Morris-Marsham

Ms Sheila O'Reilly & Mr Peter McKay

Mr & Mrs Colin Pearson

Mr Nicholas Powell

& Dr Cecilia Powell

Mr & Mrs Jeremy Prescott

Mr & Mrs Richard Raeburn

Mr & Mrs Charles Randell

Mr Ian Rankine

Mrs Barbara Richardson

Dr Yvonneke Roe

Mr & Mrs Andrew Rutherford

Mr & Mrs William Saunders

Mr & Mrs Mark Smith

Mr & Mrs Chris Smith

Mr & Mrs Patrick Spencer

Ms Katharine St. John-Brooks & Mr Vivian Bazalgette

Mrs Ann Thornton

Mr & Mrs David Trace

Mr & Mrs David Tucker

Ms Eugenie Turton CB

Mr & Mrs John Vadgama

Mrs Ellen-Grethe Vines

Mr Willis Walker & Mrs Gay Walker (Chairman)

Mr & Mrs Graham Walsh

Mr & Mrs John Ward

Mr & Mrs Thomas Wells

Mr David Wells

Mr & Mrs Charles Whiddington Esq

Mr Simon White & Dr Frances Woisin

Mr & Mrs Chris Wilkinson

Mr Martin Wyld CBE

And others who wish to remain anonymous

\*Denotes donor has sadly passed away

### AMERICAN FRIENDS OF DULWICH PICTURE GALLERY MEMBERS 2011-2012

The American Friends of Dulwich Picture Gallery is a non-profit organisation exempt from federal income tax under Section 501( c)(3) [EIN: 98-0391841].

+ We would like to thank the American Friends of Dulwich Picture Gallery for their generosity and support. The grants from the American Friends of Dulwich Picture Gallery Inc. in 2011-12 were made possible through the generosity of The Arthur and Holly Magill Foundation.

Mr & Mrs James Brice

Mr & Mrs Blair Brown

Mr & Mrs Allan Daniel

Mr & Mrs Bahman Irvani

Mr Joseph T Lonsdale V

Mr Gregory Miller & Mr Michael Wiener

Mr & Mrs Arthur S Reynolds

Ms Lucy Rhame

Mr & Mrs Mortimer Sackler, Jr

George & Patti White

Mr & Mrs Stephen Wilkinson

Mrs Loraine Williams

Mr & Mrs Dave Williams

And others who wish to remain anonymous

## APPENDIX 3: LIST OF LENDERS

### CANADIAN FRIENDS OF DULWICH PICTURE GALLERY MEMBERS 2011-2012

The Canadian Friends of Dulwich Picture Gallery is a designated Charitable Organisation issued under the Canadian Corporations Act (Charity Number: 81828 9860 RR0001).

Mr Phillip Crawley  
Mr Rupert Duchesne & Ms Holly Coll Black  
Ms Martha Durdin & Mr J Anthony Caldwell  
Mr & Mrs George C Estey  
Mark & Dawn Fell  
Mrs Alison Fisher  
Rod & Lois Green  
Mr & Mrs David Heffel  
Lawson A.W. Hunter  
Joan F. Ivory  
Mr Gregory Kane QC & Ms Adrian Burns  
Mr & Mrs Michael Koerner C.M.  
Mr George Lengvari  
Mr John R McCaig  
Ms M Ann McCaig  
Sir Christopher & Lady Ondaatje  
A. K. Prakash  
Mr & Mrs Ashley Prime  
Mr & Mrs Fred Schaeffer  
Mr & Mrs Richard Self

Sandy Sellers & Katharine Smithrim  
Dasha Shenkman  
Mr David Silcox C.M.  
Mr & Mrs Michael Tims  
And others who wish to remain anonymous

Our temporary exhibitions programme is made possible by the provision of insurance through the Government Indemnity Scheme. Dulwich Picture Gallery would like to thank HM Government for providing Government Indemnity and the Department for Culture, Media and Sport and Arts Council England for arranging the indemnity. Dulwich Picture Gallery are deeply grateful to the following institutions and individuals for loans of work.

### MASTERPIECE A MONTH: PRESIDING GENIUS

#### Lenders only from April to December 2011:

Galleria degli Uffizi, Florence: Paolo Veronese, *Venus and Mercury before Jupiter*, c. 1555-60

Rijksmuseum, Amsterdam: Rembrandt van Rijn, *Rembrandt's son Titus dressed as a monk*, 1660

The Frick Collection, New York: Jean-Auguste-Dominique Ingres, *Comtesse d'Haussonville*, 1845

Van Gogh Museum, Amsterdam: Vincent van Gogh, *Self-portrait*, 1887

National Gallery of Art, Washington: Thomas

Gainsborough, *Mrs Richard Brinsley Sheridan*, 1785-87

Royal Academy of Arts, London: John Constable, *The Leaping Horse*, 1825

Tate: David Hockney, Mr and Mrs Clark and Percy, 1970-71

National Gallery of Scotland: Domenichino, *The Adoration of the Shepherds*, c 1607-10

### TWOMBLY AND POUSSIN: ARCADIAN PAINTERS

Private Collections  
Devonshire Collection: The Trustees of the Chatsworth Settlement

Daros Collection, Switzerland

Fitzwilliam Museum, Cambridge

Karsten Greve

Museo Nacional del Prado, Madrid

Art Institute of Chicago

The National Gallery, London

Bayerische Staatsgemäldesammlung, München, Udo and Anette Brandhorst Collection

The Royal Collection, Windsor, Lent by Her Majesty the Queen

Tate Frith Street Gallery (for Tacita Dean)

### PAINTING CANADA: TOM THOMSON AND THE GROUP OF SEVEN

Private Collections  
National Gallery of Canada

Art Gallery of Ontario (includes the Thomson Collection)

McMichael Canadian Art Collection, Canada

Hart House Gallery, University of Toronto

Winnipeg Art Gallery, Canada

University of Toronto Art Collection, Canada

Faculty Club, University of Toronto, Canada

Museum London, Ontario, Canada

RiverBrink Art Museum, Canada

### RAGAMALA: PAINTINGS FROM INDIA

The Claudio Moscatelli Collection

Francesca Galloway, London

Simon Ray

### VAN DYCK IN SICILY: PAINTING THE PLAGUE

The Metropolitan Museum of Art, New York

Patrimonio Nacional, Real Armería del Palacio Real de Madrid

Galleria Sabauda, Turin  
Liechtenstein. The Princely Collections, Vaduz-Vienna  
The British Museum, London  
Sackville Collection, Knole  
Galleria Sabauda, Turin  
Tatton Park, The Egerton Collection (The National Trust)

Houston Baptist University, Houston, Texas

Gift of the Morris Collection, 2009

Museo Diocesano, Palermo

Museo de Arte de Ponce, The Luis A. Ferré Foundation Inc., Ponce, Puerto Rico

The Wellington Collection, Apsley House (English Heritage)

The Menil Collection, Houston

Museo Nacional del Prado, Madrid

## APPENDIX 4: IMMUNITY FROM SEIZURE REPORT 2011-2012

In April 2009, the Secretary of State granted Dulwich Picture Gallery approved status under Part 6 of the Tribunals Courts and Enforcement Act 2007 allowing us – where necessary – to apply for protection for specific loans to exhibitions under the provisions of the Act.

Dulwich Picture Gallery has continued to apply the necessary processes developed following our approved status and in accordance with our Due Diligence Policy. This involves compiling obtainable provenance information for each loan, researching and requesting further information, running checks via art loss databases, carefully considering any remaining gaps in provenance and evaluating risk of third party claim.

Details of the works requiring immunity from seizure together with results of the relevant provenance research are published on Dulwich Picture Gallery's website at least four weeks before the objects arrive in the UK.

Over the 2011-2012 period three exhibitions were shown at Dulwich Picture Gallery containing works for which

immunity from seizure was granted, covering a total of 35 works. During this period no enquiries or claims were received under Section 7 of the Protection of Cultural Objects on Loan (Publications and Provision of Information) Regulations 2008.

#### Exhibitions including protected works:

*Masterpiece a Month: Presiding Genius*  
April 2011 – January 2012  
4 paintings

*Painting Canada: Tom Thomson and the Group of Seven*  
19 October 2011 – 8 January 2012  
24 paintings

*The Melosi Series: Rediscovering Old Masters*  
*Van Dyck in Sicily: 1624-1625 Painting and the Plague*  
15 February – 27 May 2012  
6 paintings, 1 sculpture

## APPENDIX 5: LIST OF TRUSTEES, COMMITTEE MEMBERS AND STAFF OF DPG

### BOARD OF TRUSTEES

James Lupton CBE  
*Chairman*  
(until Dec 2011)  
Managing Director,  
Greenhill & Co

Simon Freakley  
*Chairman*  
(from Dec 2011)  
CEO, Zolfo Cooper Europe

Sarah Crompton  
Arts Editor in Chief,  
Telegraph Media Group

Marion Gibbs  
(until Sep 2011)  
Headmistress,  
James Allen's Girls' School  
Trustee, Arvon Foundation  
Member of Council, Society  
for Promotion of Hellenic  
Studies

Colleen Harris MVO  
(from May 2011)  
Director, Colleen Harris  
Associates  
Advisory Board, Sahara  
Group (Middle East)  
Member of Council,  
Royal Albert Hall,  
Trustee YMCA (Central)  
Board Member  
Hackney Empire  
Member, Cancer  
Research UK

James Hughes-Hallett, CMG  
Chairman, John Swire &  
Sons Ltd  
Director, Cathay Pacific  
Airways Ltd  
Director, HSBC Holdings Plc  
Director of Governing Board,  
The Courtauld Institute  
Trustee, Esmeé Fairbairn  
Foundation  
Member, Governing Body,  
SOAS, University  
of London

Bernard Hunter  
UBS Global Asset  
Management  
Trustee, Borough Market  
Chairman, Desenfans Circle

Nichola Johnson  
Former Director, Sainsbury  
Centre for Visual Arts Chair,  
Clare Leadership  
Programme Chair, University  
Museums Group Museums  
Association Council Member  
Governor, Wymondham  
College

Trustee, York Museums Trust  
Trustee, Ruskin Foundation  
Board Member, Lewis  
Glucksman Gallery,  
University College, Cork

Radhika Radhakrishnan  
(from Sept 2011)  
Finance Director,  
20th Century Fox Home  
Entertainment Ltd.

Dame Theresa Sackler, DBE  
Trustee, World  
Monuments Fund  
Trustee, The Dr Mortimer  
and Theresa Sackler  
Foundation  
Trustee, Capital City  
Academy

Andrew Shaw  
(until Mar 2012)  
Managing Director,  
North British Windpower  
Ltd

Joseph Spence  
(from Sept 2011)  
The Master,  
Dulwich College

Eugenie Turton CB  
Non-executive Director,  
Wates Group Ltd  
Non-executive Director,  
Rockpools Ltd  
Trustee, Wessex  
Archaeological Trust  
Trustee, Horniman Museum  
Trustee, Sir Edward Heath  
Charitable Foundation  
Member, Finance and Policy

Association  
Lay Member, Salisbury  
Cathedral Chapter

Johnny Van Haeften  
Director, Johnny  
Van Haeften Ltd  
Executive Committee  
member of The European  
Fine Art Foundation  
Former Vice Chairman of  
the Society of London Art  
Dealers  
Former Council Member of  
the British Antique Dealers  
Association

Martin Wyld CBE  
Conservation Consultant  
Trustee of the Bridget Riley  
Art Foundation

### DULWICH PICTURE GALLERY ENTERPRISES LTD. BOARD OF DIRECTORS

Eugenie Turton  
CB (Chair)  
James Close  
Kerry Foster  
Paula Dimond  
Ian A C Dejardin

### ADVISORY COMMITTEES

Membership of the  
Advisory Committees  
includes Trustees, staff,  
and other individuals with  
relevant experience who  
have agreed to make time  
available to the Gallery.

### Education Advisory Board

Robert Gore (Chair)  
Anthony Brown  
Christina Gascoigne  
Beatrice Lupton  
Baroness Estelle Morris  
Humphrey Ocean, RA  
Lady Normington  
(Win Harris)  
Yvonne Riley  
Dame Theresa Sackler, DBE  
The Hon Nicholas Wallop  
Professor the Lord Kakkar  
Ms Dalya Alberge

### The Friends of Dulwich Picture Gallery

The Friends of Dulwich  
Picture Gallery is an  
independent charity  
(number 803727) which  
provides financial support  
to the Gallery as well as  
organising a programme  
of concerts, lectures, and  
social events for members.  
During 2011-2012 its  
committee members  
were:

### Officers

Jenny Sweeney (Chair)  
Pat Cox (Vice Chair)  
Peter Frost (Hon Treasurer)  
Jane Reid (Hon Secretary)

### Elected

Peter Belchamber  
Rona Black  
Rita Frost  
Lata McWatt  
Judy Mewburn  
Eve Mitleton-Kelly  
Pia Helena Ormerod  
Jane Peacock  
Gerry Ratzin

### Co-opted

Gail Mitchell  
Tamara Tempera  
Steve Viney

### Campaign Cabinet

James Lupton CBE (Chair)  
Dame Theresa Sackler, DBE  
Bernard Hunter  
James Hughes-Hallett  
Robert Suss  
Richard Martin  
Susie Tinsley  
Jenny Sweeney  
Peter Whiteman QC  
Mary Reilly  
Ian A C Dejardin  
Lily Harriss

### Finance and Audit Committee

Radhika Radhakrishnan  
(Chair)  
Simon Freakley  
Crispin Southgate  
Ian A C Dejardin  
Paula Dimond

### American Friends of Dulwich Picture Gallery

Susie Tinsley (President)  
Ian A C Dejardin  
(Vice President)  
James Lupton CBE  
Nancy Casserley  
Gregory R Miller  
Monique Quesada  
Holly Melosi  
Bahman Irvani  
Sophie de Brito  
Philip McHugh  
Lily Harriss  
Paula Dimond

### Canadian Friends of Dulwich Picture Gallery

David Silcox (Chair)  
Rupert Duchesne  
Gregory Kane  
Phillip Crawley  
Ash Prakash  
Michael Koerner  
Ashley Prime  
Martha Durdin  
Mark Fell  
Lily Harriss  
Ian A C Dejardin  
Paula Dimond  
Annamaria Joyce

### Staff in post at the date of this review are:

#### Director's Office

The Sackler Director	Ian A C Dejardin
Executive Assistant to the Director and Board of Trustees	Ben O'Connor (until October 2011)
Executive Assistant to the Director and Board of Trustees	Harvey Marcus (from December 2011)

#### Finance

Finance Director	Paula Dimond
Head of Retail	Iain Betterton
Finance Office	Annamaria Joyce
Finance Officer	Janet Massey
Gallery Events Manager	Liz Herring
Retail Assistant	Jean Hill

#### Curatorial and Exhibitions

Arturo and Holly Melosi Chief Curator	Xavier Bray
Curatorial Collections Manager	Lucy Findley
Assistant Curator	Amy Concannon
Assistant Curator (until August 2011)	Sarah Moulden
Assistant Curator (until October 2011)	Valentina Ravaglia
Head of Exhibitions	Clare Simpson
Exhibitions Officer	Amy Concannon
Exhibitions Officer	Philippa Hemsley
Exhibitions Officer	Lizzie Watson
Exhibitions Assistant	Rebecca England
Picture Librarian	Fulvio Rubesa

#### Education

Director of Learning and Public Affairs	Gillian Wolfe CBE
Senior Education Department Manager	Stevie Edge-McKee
School Programme Manager	Louise Conaghan
Educational Public Programme Manager	Lettie McKie
Community Engagement Manager	Michelle Douek



Good Times Coordinator	Clare Ferdinando (maternity leave) Lou Abbotts (maternity cover until February 2012) Emily Christou (maternity cover)
Urban Youth Coordinator	Alice Ross (until February 2012) Jessie Prior Jasmine Parker (until January 2012) Francesca Centioni Erin O'Connor Flo Wales Bonner Rebecca Palmer Lucy Shipp
Sackler Centre Technicians	Mary Brodrick Sarah Bridgland Eugene Ankomah Dr Kenneth Wolfe
Freelance Programme Coordinators	

## Development and Communications

Director of Development and Communications	Lily Harriss
Development Manager, Trusts and Foundations	Andrew Hayes
Development Manager, Campaign	James Thompson
Development Officer, Membership and Patrons	Kathleen Bice
Development Services Administrator	Kim Balukiewicz
Communications Manager	Eleanor Manwell
Press Officer	Madeline Adeane
Digital Communications Officer	Stuart Leech
Communications and Community Officer	Andrea Szeplaki
Dulwich OnView Editor	Shapa Begum

## Operations

Head of Operations	Antonia Coonan
Operations Officer	Ian Noble
Ticketing Officer	Lizbeth Frampton
Reception	Ruth Houlsby

## Gallery Staff

Resident Custodians	Roderick Baxter Oliver Webster
---------------------	-----------------------------------

Full-time attendants  
Patrick Butler  
Jessica Geary  
Eleanor Griffin  
Tara Idnani  
Andrew Kerr  
Eriko Horsley  
Jai Watson

Part-time and zero hours attendants  
Meriel Adraham  
Stuart Allford  
Simon Balcon  
Katherine Brennan  
Gareth Cadwallader  
Oliver Campbell  
Giuseppe Capone  
Cailean Couldridge  
Sandra Dwelly  
Matteo Fuzzi  
Nadan Hadzic  
Fraser Hollingworth  
Poppy Jones-Pierpoint  
Giuseppe Macchi  
Olivia Mackay  
Gemma Nelson  
Christopher Riggio  
Fulvio Rubesa  
Colleen Selwyn  
Olivia Urquhart  
Thomas Vella  
Freddy Williams

## Restaurant

The Restaurant is run by Digby Trout Restaurants, manager Sueli Pinheiro.

## PROFESSIONAL SERVICES

The following have been appointed by the Trustees to provide professional services:

### Painting Conservators

Sophia Plender  
Nicole Ryder

### Frame Conservator

Thomas Proctor

### Auditors and Tax Advisers

PKF (UK) LLP, Farringdon Place, 20 Farringdon Road, London EC1M 3AP

### VAT Advisers

PKF (UK) LLP, Farringdon Place, 20 Farringdon Road, London EC1M 3AP

### Solicitors

IBB Solicitors, Capital Court, 30 Windsor Street, Uxbridge, Middlesex, UB8 1AB

### Investment Managers

Baring Asset Management, 155 Bishopsgate, London EC2M 3XY

Black Rock Investment Managers, 33 King William Street, London EC4R 9AS

### Bankers

Barclays Bank PLC, Peckham Rye Branch, 223/229 Rye Lane, London SE15 4TY

Bank of Scotland, Pentland House, 8 Lochside Avenue, Edinburgh, EH12 9DJ

## THE SACKLER CENTRE FOR ARTS EDUCATION

The Gallery's award-winning Education Department runs a programme of courses and activities in the Sackler Centre for Arts Education at the Gallery, and at other sites throughout south London. As well as the permanent staff listed above, the following artists, specialists, project co-ordinators, assistants and volunteers work with the Education Department according to the needs of particular projects:

### Teachers, Guides and Volunteers

Ali Benton  
Anna Bonavia  
Anne Collins  
Annie Ricketts  
Barbara Hendrie  
Beatrice Braude  
Betty Ratzin  
Carla Pellegrinelli  
Carol Cooper  
Carol Craig  
Caroline James  
Catherine Rawlinson  
Charlotte George  
David Lipscomb  
Desmond Churcher  
Diana Crewes  
Diana Fyfe  
Diana Heppenstall  
Dr. Susan Wood  
Edith Slee  
Eileen Wilson  
Eleanor Griffin  
Elinor Lewis Nunes  
Elizabeth Shuck  
Eva Helena Monson  
Freda Woodcock  
Freya Folasen  
Gill Hancock  
Gulnar Cepoglu  
Hannah Belcher  
Helene Latey  
Hilary Gaster  
Ingrid Beazley  
Iris Jenkins  
Isaac Burrows  
Jack Stimpson  
Jackie Barker  
Jacqueline Whitaker  
Jane Hudson-Davies  
Jane MacDonald  
Jessica Cole  
John O'Donnell  
Jojo Mullen  
Judy Mewburn  
Julie Green  
Katya Hills  
Kirsty Gould  
Kym Jacobson  
Lady Gill Hancock  
Leonie Irvine  
Linda Horsfield  
Lise Fowle  
Liz Day  
Manuela Kerr-Smiley  
Maria Asensio  
Maria Bartolo  
Mariska Beekenkamp  
Martina Nalesso  
Mary Herbert  
Mary Poole-Wilson  
Mary-Beth Train  
Meghan Goodeve  
Millie Stoney  
Mireille Ellington

Nicky Villeneau  
Oliver Campbell  
Olivia Willers  
Oonagh Van Der Bourgh  
Pat Drew  
Patricia Camerlynck  
Penny Treadwell  
Philippa Couch  
Philippa Owen  
Rachel Lloyd  
Rebecca Olajide  
Rhea Powell  
Rosemary Dawson  
Sally Elliott  
Sarah Ciacci  
Shirley Lumsden  
Steph Robertson  
Susan Cookson  
Susan King  
Suzanne Harris  
Val Watkins  
Victoria Henderson-Cleland  
Virginia Tuck  
Wendy Hildreth  
Yumiko Inagaki

### Artists and Subject Specialists

Adrian Wood  
Ben Senior  
Bridget Bailey  
Carole Waller  
Caroline Nunan  
Claire Harmer  
Deborah Andrews  
Drew Sinclair  
Erica Parrett  
Felicity Montaigu  
Hannah Carding  
Hazel Adams  
Isabella Lockett  
Jessica Palmer  
Joanna van der Meer  
Joanna Veevers  
Joy Haynes  
Karen Vost  
Linda Litchfield

Liz Butler  
Liz Charsley-Jory  
Lois Strover  
Luke Jones  
Martin Gayford  
Mik Brown  
Nicola Dunn  
Paul Newland  
Peter Astwood  
Peter Brown  
Rebecca Allen  
Roberto Lagnado  
Ruth Dupre  
Sally Cutler  
Sara Lee  
Sophie Herxheimer  
Stewart Ganley  
Susan Attenborough  
Valerie McBride  
Valerie Woodgate  
Victor Opeyokun

The Gallery is also grateful to St Barnabas Parish Hall for providing a venue where visiting schools have lunch, South London Scout Centre where Public Courses meet and to Bartleys Flowers for their generous sponsorship over the past year.





