

Room 1

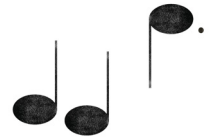


Yoshida Hiroshi visited Dulwich Picture Gallery in the year 1900.

Find his signature somewhere in this room.



Room 2



Yoshida Tōshi, Hiroshi's son, created a Chimney Forest.

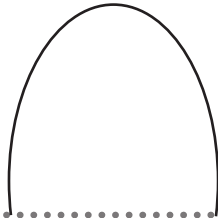
Use this space to draw what you think a chimney forest would look like, then find Tōshi's version.

# YOSHIDA

# 吉田

Three Generations of Japanese Printmaking

Make your mark by creating your own signature



How many animals can you find hiding in this room?  
Hint: some of them are camouflaged...



Room 4



Create your own pattern by walking around the room. Draw the pattern you made with your feet here...



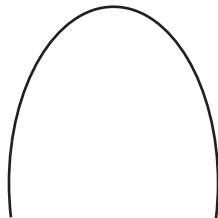
Room 3



Can you find Yoshida Chizuko's Window?  
Draw a landscape you'd like to see outside your window.

How many different petal shapes can you find in this room?

Draw all the different shapes you can see.



Find Yoshida Hodaka's Kite in this room.  
How many different colours has he used?



# YO SHI

# DA

**Three  
Generations  
of Japanese  
Printmaking**

吉  
田

Look, wander, explore...

and make your marks here!

Generations of the Yoshida family have travelled the world far and wide, creating art inspired by the places they visited.

Many of their artworks depict beloved cities and landmarks.

Use this resource as a guide through some of the landmarks in this exhibition.

