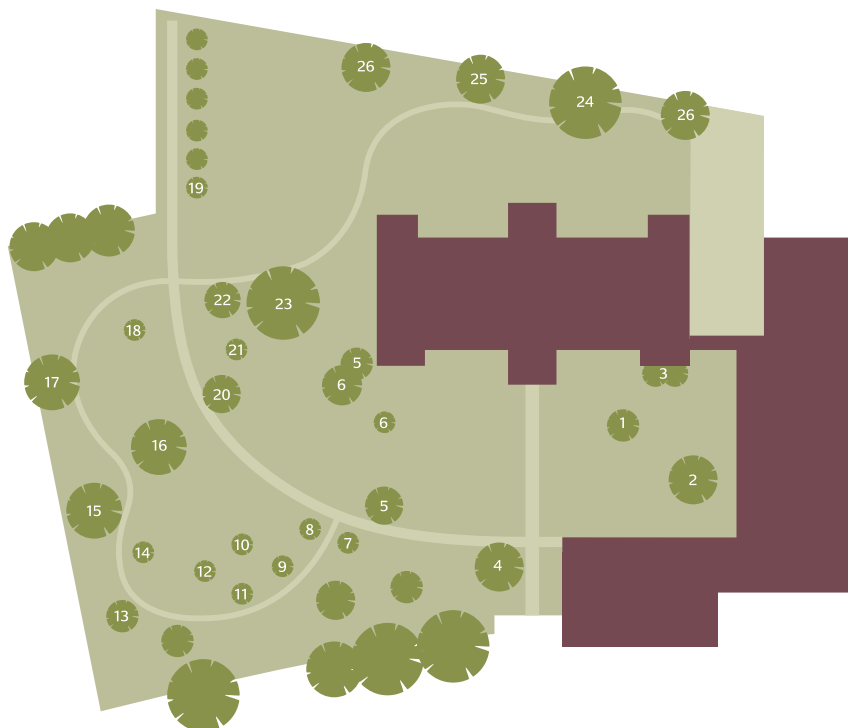




# Rare Trees at Dulwich Picture Gallery



- |  |  |   |
|--|--|---|
| 1. Judas Tree<br><i>Cercis siliquastrum</i>                | 10. Handkerchief Tree<br><i>Davidia involucreta</i>                | 19. Sweet Gum<br><i>Liquidambar styraciflua</i>     |
| 2. Dawn Redwood<br><i>Metasequoia glyptostroides</i>       | 11. Golden Indian Bean Tree<br><i>Catalpa bignonioides 'Aurea'</i> | 20. Atlas Cedar<br><i>Cedrus atlantica</i>          |
| 3. Bullbay<br><i>Magnolia grandiflora</i>                  | 12. English Oak<br><i>Quercus robur</i>                            | 21. Walnut<br><i>Juglans regia</i>                  |
| 4. Japanese Maple<br><i>Acer japonica</i>                  | 13. Black Gum<br><i>Nyssa sylvatica</i>                            | 22. Box<br><i>Buxus sempervirens</i>                |
| 5. Black Mulberry<br><i>Morus nigra</i>                    | 14. Persian Ironwood<br><i>Parrotia persica</i>                    | 23. Red Oak<br><i>Quercus rubra</i>                 |
| 6. Swamp Cypress<br><i>Taxodium distichum</i>              | 15. Kentucky Coffee Tree<br><i>Gymnocladus dioicus</i>             | 24. Common Beech<br><i>Fagus sylvatica</i>          |
| 7. Honey Locust<br><i>Gleditsia triacanthos 'Sunburst'</i> | 16. Tulip Tree<br><i>Liriodendron tulipifera</i>                   | 25. Copper Beech<br><i>Fagus sylvatica purpurea</i> |
| 8. Coral-bark Maple<br><i>Acer palmatum 'Senkaki'</i>      | 17. Wellingtonia<br><i>Sequoiadendron giganteum</i>                | 26. Dawyck Beech<br><i>Fagus sylvatica 'Dawyck'</i> |
| 9. Foxglove Tree<br><i>Paulownia tometosa</i>              | 18. Paper Bark Maple<br><i>Acer griseum</i>                        |   |

### 1. Judas Tree

*Cercis siliquastrum*

So called because of a tradition that Judas hanged himself from one. Has pretty pinky-mauve flowers before the leaves come out

### 2. Dawn Redwood

*Metasequoia glyptostroides*

A deciduous conifer from China. An ancient tree which was thought to be extinct. First specimens brought to Britain in the late 1940s. Pale green leaves. Similar to Swamp Cypress, but with opposite leaflets

### 3. Bullbay

*Magnolia grandiflora*

Evergreen tree usually grown against a wall. Large leaves and enormous white flowers in summer with a wonderful smell

### 4. Japanese Maple

*Acer japonica*

There is a wide variety of hybrids. The leaves are pale green, turning red in autumn

### 5. Black Mulberry

*Morus nigra*

This tree has delicious fruit, similar to loganberry, but it is the white Mulberry leaves which are eaten by silkworms

### 6. Swamp Cypress

*Taxodium distichum*

This dying tree, 80 ft tall (75m) is a deciduous conifer native to America. A young one has been planted nearby

### 7. Honey Locust

*Gleditsia triacanthos 'Sunburst'*

This has yellow leaves in summer and long black pods in autumn which clatter in the wind. The honey from the beans was used to brew beer

### 8. Coral-bark Maple

*Acer palmatum 'Senkaki'*

Another Japanese maple with brilliant red bark and golden leaves on autumn

### 9. Foxglove Tree

*Paulownia tometosa*

A newly planted tree with very large leaves and violet to purple bell shaped flowers, like a foxglove, appearing in late spring, on mature trees. It comes from China where only the Empress was permitted to have one on her grave

### 10. Handkerchief Tree

*Davidia involucrata*

Another young tree, from China. In May the small flowers are hidden by the spectacular drooping snowy white bracts, which gives it its popular name, though these may not appear until the tree is at least ten years old

### 11. Golden Indian Bean Tree

*Catalpa bignonioides Aurea*

Very late to leaf and has panicles of white flowers in summer and long dark slender pods in autumn

### 12. English Oak

*Quercus robur*

This tree was planted by the Queen in 2000, to commemorate the re-opening of the Gallery. It is the most common form of our native oak, is very long lived and is famous for its timber. There are several other oaks in the garden

### 13. Black Gum

*Nyssa sylvatica*

Another tree native to America. Leaves turn brilliant orange and red in autumn

### 14. Persian Ironwood

*Parrotia persica*

This tree was clipped as a bush in the past so now it is multi-stemmed. Leaves, similar in shape to beech, turn red in autumn

### 15. Kentucky Coffee Tree

*Gymnocladus dioica*

A handsome tree of the pea family. Looks very bare and black in winter. The beans were used to make a coffee-like beverage by the early Americans

### 16. Tulip Tree

*Liriodendron tulipifera*

Wonderful large yellow orange flowers in summer. The unusual shaped leaves turn butter yellow in autumn

### 17. Wellingtonia

*Sequoiadendron giganteum*

A fine evergreen conifer planted here in 1972, but not likely to reach the 100m of trees in the high Sierra Nevada, California

### 18. Paper Bark Maple

*Acer griseum*

Another Japanese maple – so called because of its orange peeling bark

### 19. Sweet Gum

*Liquidambar styraciflua*

These six trees, planted to mark the path, have maple like leaves, which turn scarlet in autumn. Now widely planted as street trees

### 20. Atlas Cedar

*Cedrus atlantica*

An evergreen conifer which will grow into a large tree. Native to the Atlas mountains of North Africa

### 21. Walnut

*Juglans regia*

These are planted for their nuts and timber. Their leaves have unique smell rather like boot polish

### 22. Box

*Buxus sempervirens*

A small evergreen, native on chalk and limestone, but widely used for low edging in parks and gardens. Its very hard wood is used in marquetry

### 23. Red Oak

*Quercus rubra*

This large oak has more pointed leaves than the English oak and they turn a marvellous red in autumn

### 24. Common Beech

*Fagus sylvatica*

This is one of a line of four beeches, easily recognised by their smooth grey trunks

### 25. Copper Beech

*Fagus sylvatica purpurea*

This is a common tree in gardens

### 26. Dawyck Beech

*Fagus sylvatica 'Dawyck'*

First grown in Scotland, in the 1840s, conical in shape with upright small branches

### Dulwich Picture Gallery

Gallery Road, Dulwich Village  
London SE21 7AD

Telephone 020 8693 5254

[www.dulwichpicturegallery.org.uk](http://www.dulwichpicturegallery.org.uk)